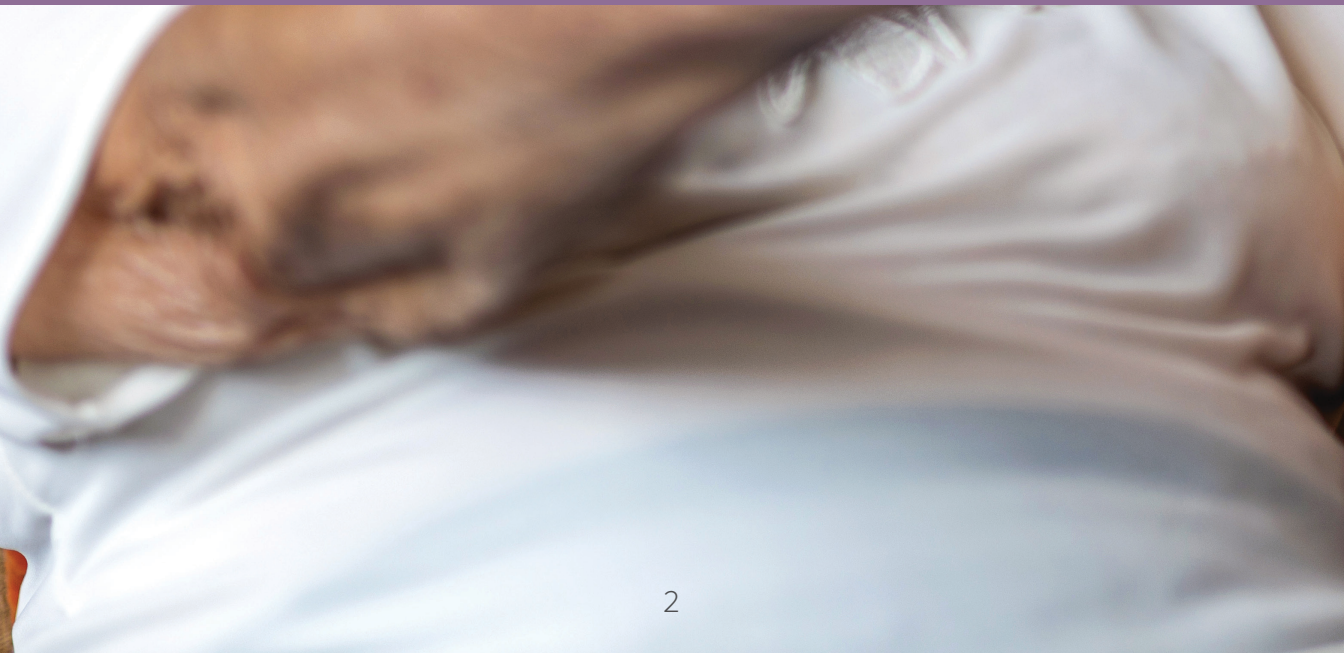


Guide to PACE

(Program of All-Inclusive Care for the Elderly)





What is PACE?

PACE offers the best of both worlds for seniors like you—access to top-tier medical care and the ability to remain in your own home and community. The program, which is Medi-Cal and Medicare funded, has been around for more than 30 years (though the model has been practiced for longer) but both demand and funding around PACE have recently accelerated as a result of the Covid-19 pandemic. It provides preventative care, primary care, acute hospital services, prescription drugs, skilled nursing services, physical therapy, occupational therapy, transportation to medical appointments, meals, and more. PACE is your health plan and your medical center, all-in-one. PACE keeps you healthy and thriving, and that means finding ways to give you the very best care possible. Again, the goal of PACE is to keep you residing in your home, staying independent and thriving in your community, with your friends and loved ones, for as long as possible.

Is PACE different than Medicare?

Yes—however, PACE is also a different way for you to get the Medicare benefits you’ve worked so hard for. Unlike Medicare, though, by enrolling in PACE, you’ll have access to services and benefits through a single program. This means that the services are coordinated by one healthcare team—dedicated to you—made up of physicians, nurses, social workers, therapists, dietitians and more. PACE also allows for greater access to long-term care support than is available through Medicare alone. In addition to traditional medical services, PACE provides social and recreational activities, as well as support for daily living tasks like bathing and mobility.

Your care at WelbeHealth



How is PACE different from a traditional medical practice?

Unlike traditional medical centers, PACE offers the convenience and comfort of receiving care in the community. For example, you'll be able to receive many services and treatments at your center or in your own home instead of having to travel long distances for appointments. In addition, PACE provides much more comprehensive support than most medical centers. Not only is it dedicated to providing top-notch medical care, but it also offers social services and recreational activities designed to maintain your quality of life. As a PACE participant, you will receive the tools and support needed to remain living independently in your community for as long as possible.



How do I qualify for PACE?

The first step to qualifying for PACE is contacting your local program. After contacting a program, you will be asked a series of eligibility questions, then an enrollment provider—usually a nurse—will assess your medical needs. You also must be age-eligible for the program—typically between 55 and 105 years old—as well as able to live safely in your home or community-based setting with PACE care. Again, the medical provider will determine your eligibility and level of care need.

The application process for PACE can seem intimidating, but rest assured that there are resources available to help guide you through it. For example, at WelbeHealth, an Enrollment Specialist will tell you if you're qualified and guide you through the enrollment process. If you meet the criteria for Medi-Cal assistance, a WelbeHealth Benefits specialist can also help you apply for Medi-Cal.

CALL (888) 402-9690

to talk to a specialist about the benefits you deserve today and see if you qualify for PACE.



What happens once I'm enrolled?

Once you are enrolled in PACE, your healthcare team works together to ensure that all your needs are being met. This includes coordinating your care with specialists, providing preventative health services, and giving you access to social activities and support groups. There are also specialized programs that can help you stay active and independent in the community, such as home care and transportation services. At WelbeHealth, it's important that you stay involved in your community. We want to see you! Not only will we pick you up for your medical appointments, but we'll also bring you to the center for warm meals, and to socialize with other seniors.



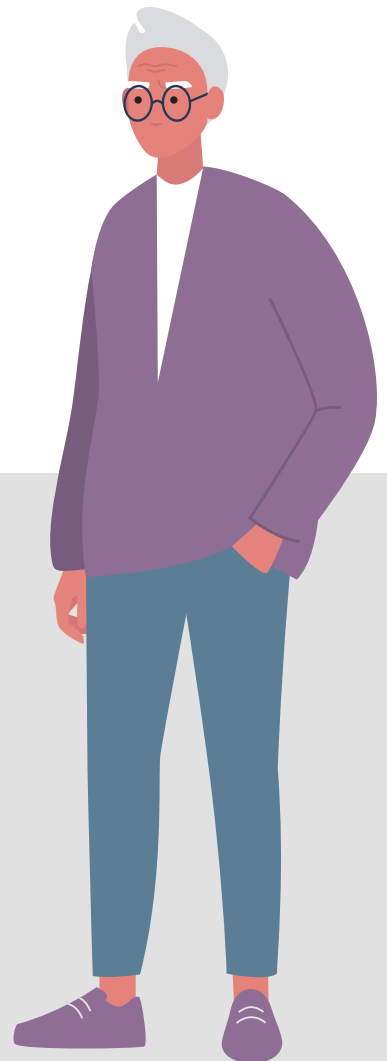
What is the cost of PACE?

The cost of PACE is often paid for by Medi-Cal and/or Medicare. For those who are eligible, services through the program are free of charge. However, depending on your income level, some out-of-pocket costs may apply. **Call us today at (888) 402-9690** so we can help you calculate what your costs will be, if any, for a WelbeHealth PACE program.

**Complete health care coverage
includes low or no-cost health care
for those who qualify for Medi-Cal:**

\$0

- \$0 doctor visits**
- \$0 prescription drug coverage**
- \$0 monthly plan premiums**
- \$0 health education programs**
- \$0 vaccinations**



Is PACE a nursing home or an assisted living community?

No—PACE is different. Unlike nursing homes and assisted living communities, PACE works to keep you living independently in your community while providing you with comprehensive medical care and social services. Instead of being required to move into a facility for long-term care, PACE helps you remain at home safely and comfortably. The program also provides access to specialized programs that can help you stay active in your community, such as transportation to medical appointments and recreational activities. In addition, PACE has dedicated healthcare professionals who are devoted to providing you with personalized care and support. PACE is not for everyone. Some seniors often need more hands-on care than can be provided in a nursing home or an assisted living facility. We're here to help assess your needs and determine if WelbeHealth's PACE program is right for you. It starts with a no-obligation phone call with a Care Advisor. **Call us at (888) 402-9690.**

“ I really want to stay home and live independently. I can see how your world shrinks once you are not able to do that. ”

WelbeHealth Participant | Stockton



Are Prescription Drugs Covered?

Yes. All prescription and non-prescription drugs deemed necessary by the PACE interdisciplinary care team are paid for by the PACE program. Both generic and formulary brand name medications are available through the program.

Will I need to switch my PCP? What about my specialists?

You may need to switch your PCP. But remember – with PACE, you have access to world-class primary care providers and are getting so much more than a PCP. You're getting a dedicated care team who have your back and team up to provide you with the very best care possible. With specialists, your WelbeHealth care team will coordinate with any specialists already involved in your care to ensure that you receive the best possible treatment and support. So, you may not need to switch your specialists.

Will I lose my Medi-Cal and/or Medicare benefits if I join a PACE program?

Absolutely not! When you join a PACE program you keep your existing benefits, and you are eligible for additional benefits under Program of All-Inclusive Care for the Elderly (PACE).

I am currently employed; do I still qualify for PACE?

Unfortunately, the PACE Health Program is primarily designed to assist seniors who require long-term care services. Therefore, being employed, even part-time, may disqualify you from this program. However, while you may not be eligible for PACE, there are other medical programs and options available that may suit your needs.

Why WelbeHealth?

4 reasons why WelbeHealth can work for you:

1. We provide full-service care tailored to you – and a dedicated care team to coordinate all your needs. At WelbeHealth, you'll have access to highly skilled doctors, dentists, home care, physical therapy and much more.
2. It is no-cost to most seniors who enroll – no gimmicks or tricks. Our services are covered at no cost to seniors who are eligible for Medi-Cal or both Medicare and Medi-Cal. There's no deductible or copay for any care, drug, or service as long as it's approved by your care team.
3. We listen to you and care for you as a whole person. We know that living well is more than healthcare. That's why we have a beautiful day center for social activities, and we go to your home to provide some care and support. We also provide transportation so you can get to and from your medical appointments.
4. It works. Studies show that PACE participants experience an 80% drop-in rate of depression after joining and that PACE participants live longer, fuller lives than those who go into nursing homes.

“The (WelbeHealth team) is very attentive, the drivers, men and women alike, and I'm more at ease because I don't have to bother any of my daughters and make them miss work to be able to take me (to doctors) because I get picked up and driven there and that means a lot to me.”

WelbeHealth Participant | Carson



How do I sign up for WelbeHealth?

If you are interested in enrolling in WelbeHealth, the first step is to call us at **(888) 402-9690** and speak with one of our Care Advisors. They will answer any questions you have about the program, including eligibility requirements and what services are available. They can also help you schedule an appointment for a free home assessment to determine if you qualify.



CALL (888) 402-9690

to talk to a specialist about the benefits you deserve today and see if you qualify for PACE.



CMS Approval 05/14/2024

H8082_PACEGuide, H1544_PACEGuide, H2384_PACEGuide,
H0934_PACEGuide, H6317_PACEGuide, H1917_PACEGuide